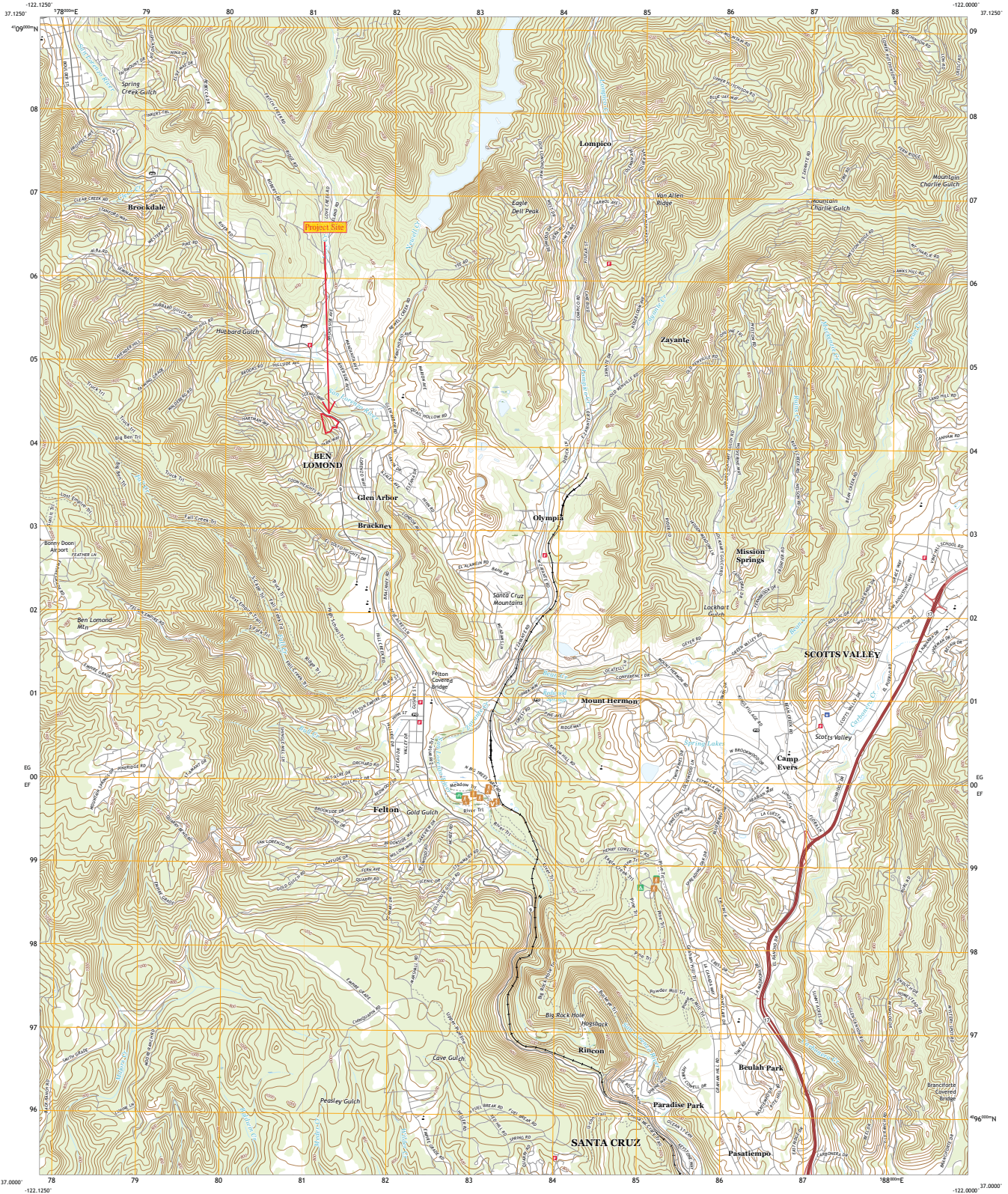




U.S. DEPARTMENT OF THE INTERIOR
U.S. GEOLOGICAL SURVEY

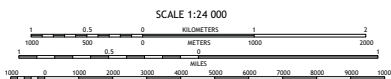
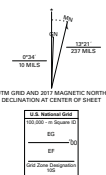


FELTON QUADRANGLE
CALIFORNIA - SANTA CRUZ COUNTY
7.5-MINUTE SERIES



Produced by the United States Geological Survey
North American Datum of 1983 (NAD83)
World Geodetic System of 1984 (WGS84), Projection and
1 000-meter grid (International Transverse Mercator, Zone 105
This map is not a legal document. Boundaries may be
generalized for this map scale. Private lands with government
reservations may not be shown. Obtain permission before
entering private lands.

Inventory	MAP	June 2016	October 2016
Roads	U.S. Census	Bureau	2016
Names	U.S. Census	GNIS	2018
Hydrography	National	Hydrography	Dataset
Contours	National	Elevation	Dataset
Boundaries	Multiple sources	see metadata file	2017
Public Land Survey System	BLM		2018
Wetlands	FWS	National Wetlands	Inventory 1993



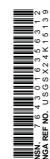
1	2	3
4	5	6
7	8	9

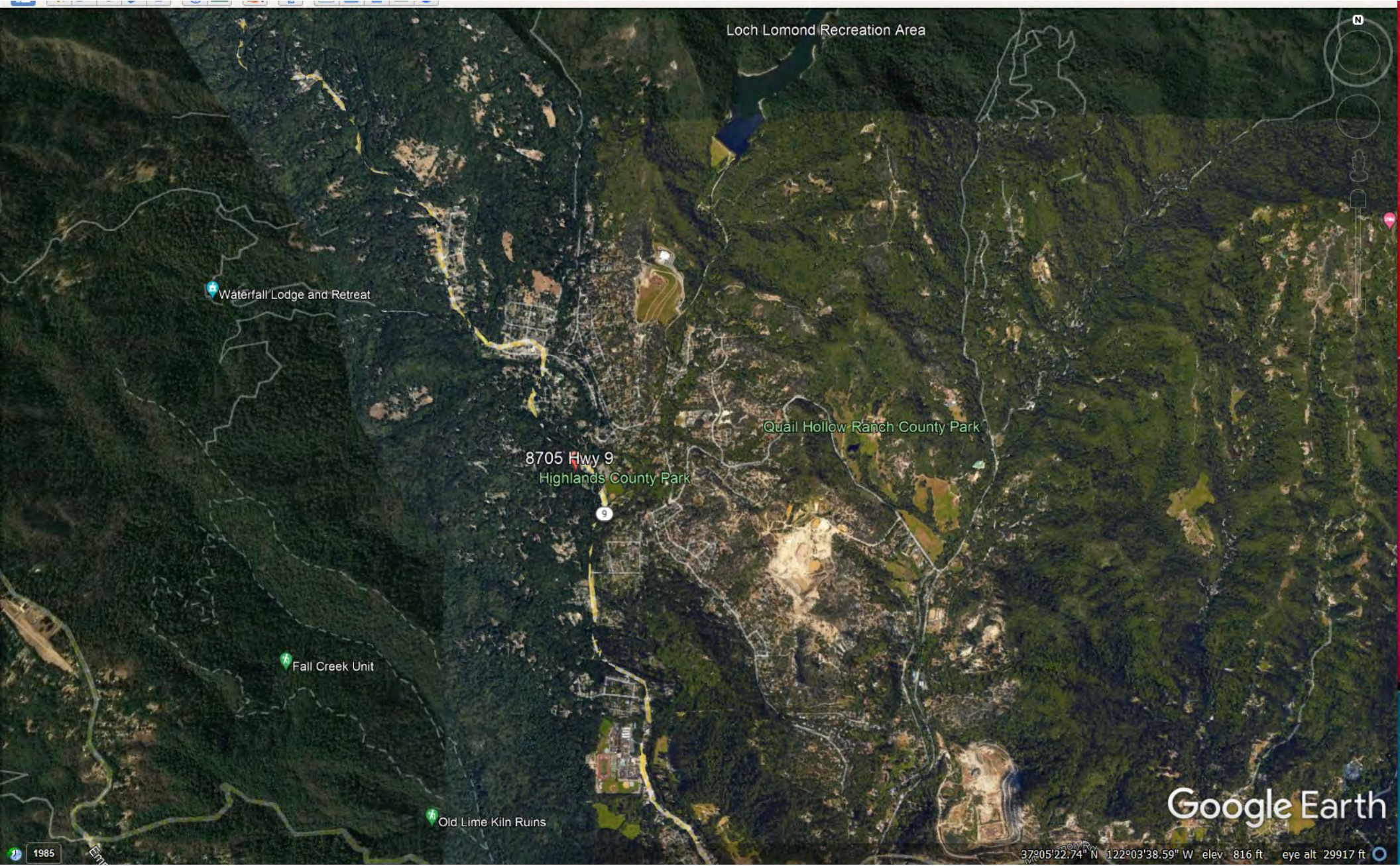
ABSOLUTE QUADRANTS



CONTOUR INTERVAL 40 FEET
NORTH AMERICAN VERTICAL DATUM OF 1988
This map was produced in conformance with the
National Geospatial Program US Topo Product Standard, 2011.
A metadata file associated with this product is draft version 0.6.18

FELTON, CA
2018





Loch Lomond Recreation Area

Waterfall Lodge and Retreat

8705 Hwy 9
Highlands County Park

Quail Hollow Ranch County Park

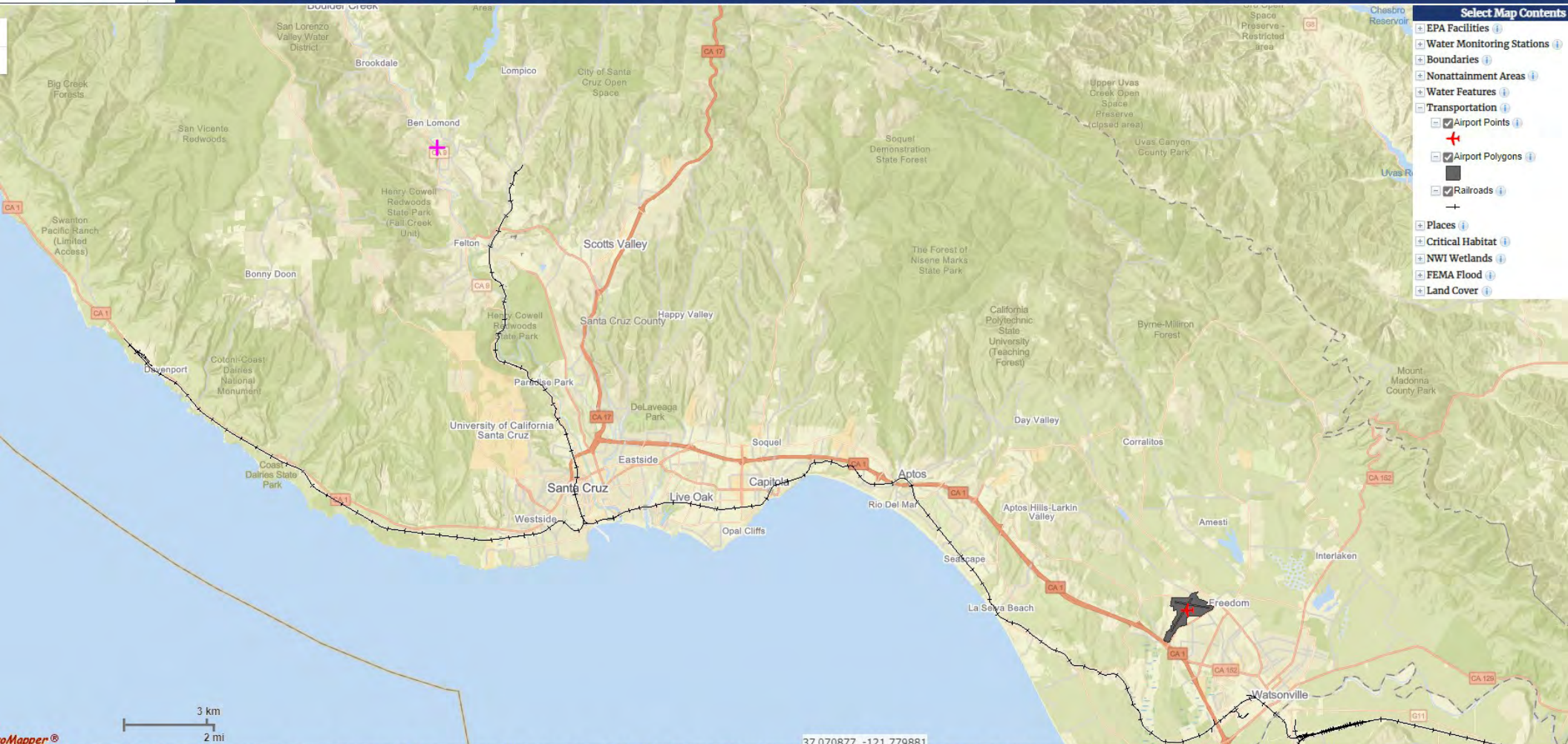
Fall Creek Unit

Old Lime Kiln Ruins

Google Earth

37°05'22.74" N 122°03'38.59" W elev 816 ft eye alt 29917 ft

1985



- Select Map Contents
- EPA Facilities
 - Water Monitoring Stations
 - Boundaries
 - Nonattainment Areas
 - Water Features
 - Transportation
 - Airport Points
 - Airport Polygons
 - Railroads
 - Places
 - Critical Habitat
 - NWI Wetlands
 - FEMA Flood
 - Land Cover



8705 Hwy 9

Ephemeral Events

Carpe Diem Financial Life Planning

Pike Dr

Crest Dr

Flintlock Ln

Versa Construction

SLV Swim Center

Redwood Dr

Scenic Way

Hillcrest Dr

Madrone Ave

Shadowbrook Rd

Highlands House

Highland Skate Park

Highlands County Park

Community Bridges Meals

Glen Arbor Rd

Railroad Ave

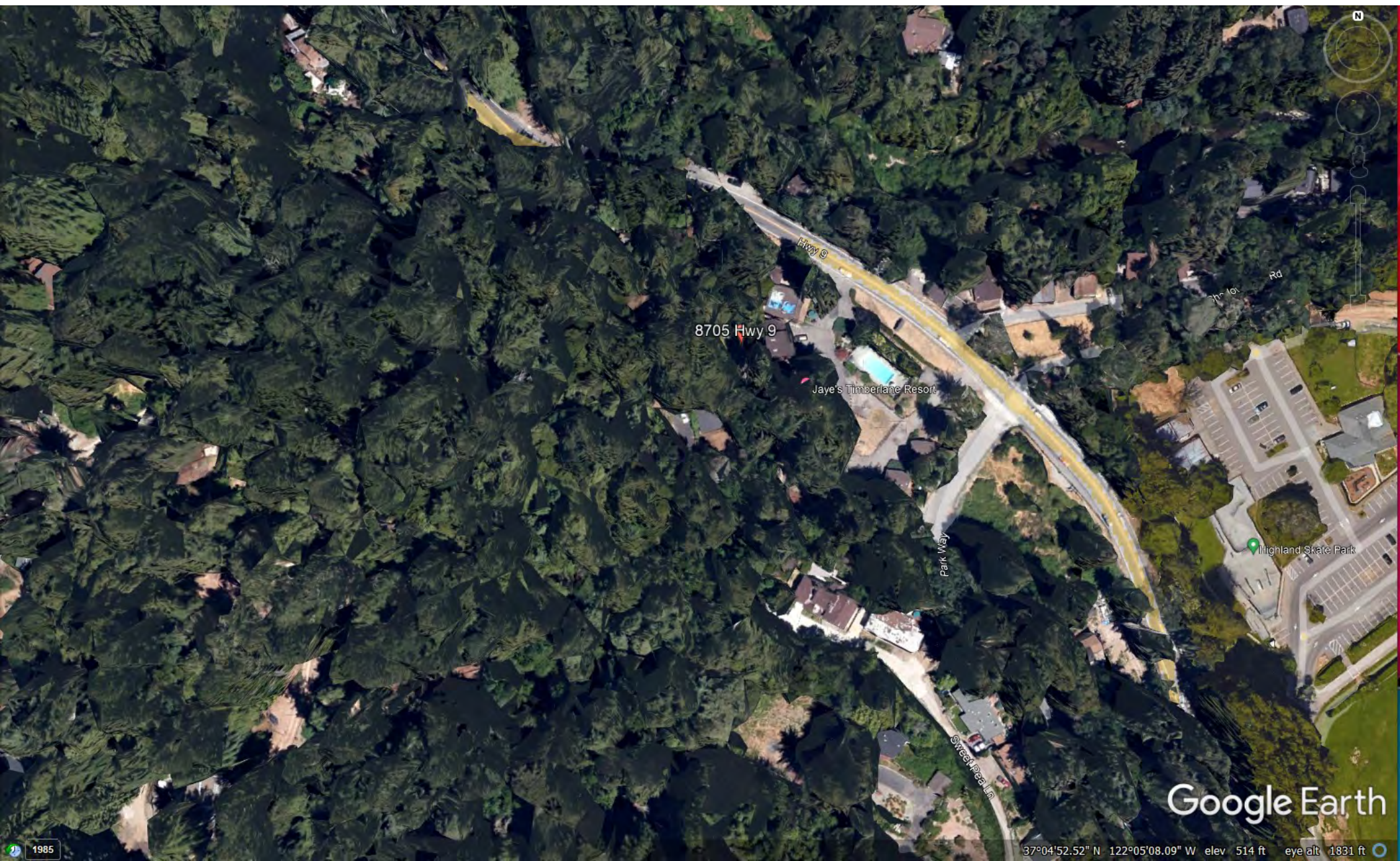
Maple Ave

Christiansen & Christiansen

Google Earth

1985

37°04'55.71" N 122°04'58.11" W elev 309 ft eye alt 5031 ft



8705 Hwy 9

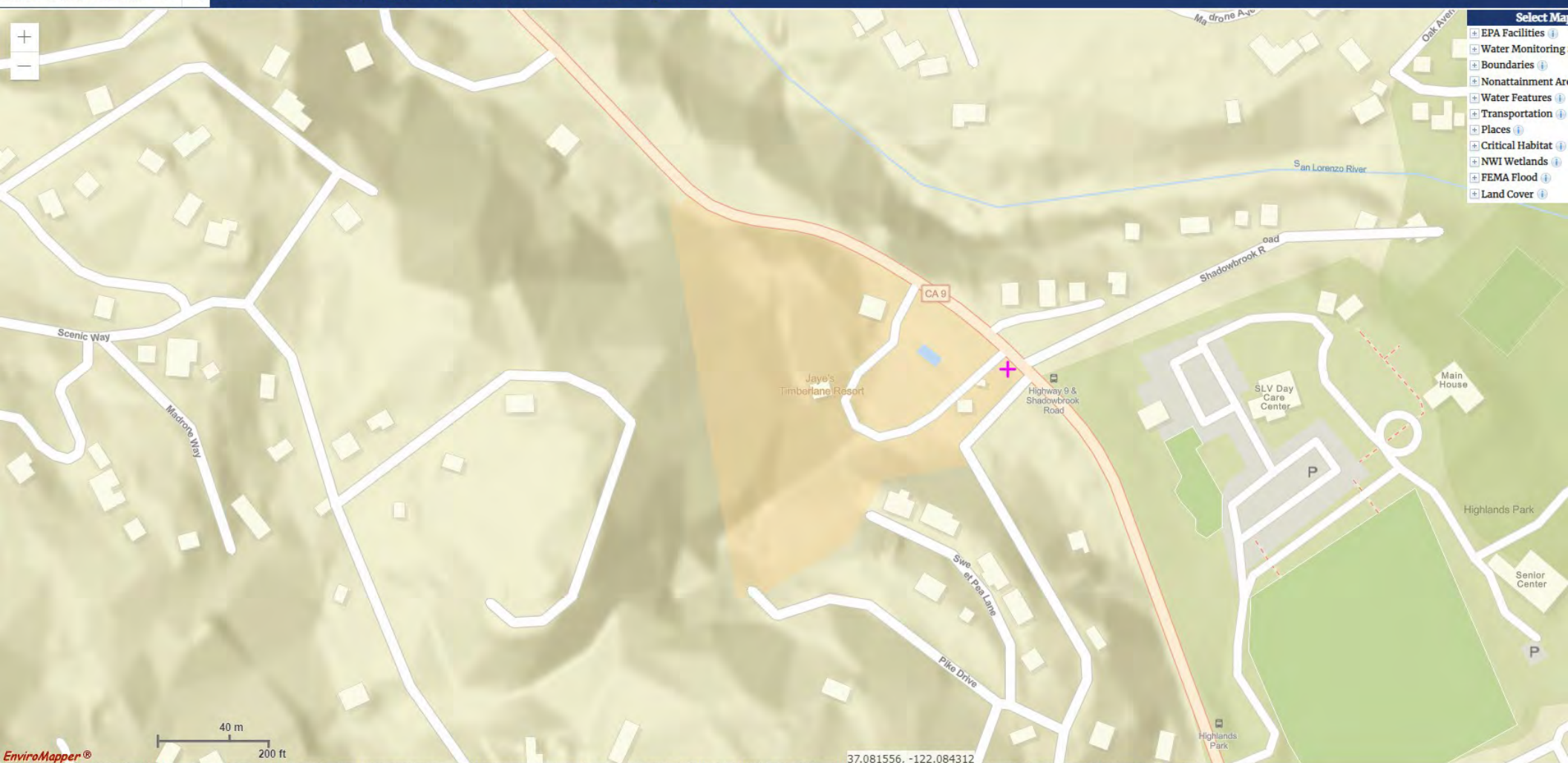
Jaye's Timberlane Resort

Highland Skate Park

Google Earth

1985

37°04'52.52" N 122°05'08.09" W elev 514 ft eye alt 1831 ft



- Select Map
- EPA Facilities
 - Water Monitoring
 - Boundaries
 - Nonattainment Area
 - Water Features
 - Transportation
 - Places
 - Critical Habitat
 - NWI Wetlands
 - FEMA Flood
 - Land Cover

APN
 Address
 Street
 Intersection

8705 HWY 9, BEN LOMOND, 95005



Select Overlay

Select Base Map

Property Report

Zoning Report



[Close](#) |
 [Parcel Info](#) |
 [Land Use](#) |
 [Biotic & Water Resources](#) |
 [Special Districts](#) |
 [Jurisdictional, Elections, & Census Hazards & GeoPhysical](#) |
 [School Districts & CSAs](#)

Parcel Information	Assessor Info	01821310	Sect Town Range	SEC9; T10S-R2W
	APN Map (Click for Map)	07827	Tax Code Areas	90-100
Recorded Maps & Docs	Click for Permit Data:	Permit Data	Map Book	078
	Click for Other Planning Data:	Planning Data	Home Owner Exemption (HOE=Yes)	HOE
Select and Query Results	Assessor's Acreage	5.2060	Assessor's Use Code Description	074-RESORT MOTEL